

SURFACE WATERTIGHT BRASS LIGHTS

Application Area

- Brass lights for engine rooms, weather-exposed areas, cargo holds, deck, stores, workshops, industrial areas

Design

- According to the rules of international classification societies, VDE and IEC

Lamp-holder

- E27

Housing

- Body made of brass
- Diffuser made of glass

Mounting

- Please see the drawings

Electric

- 230 V 50 or 60 Hz

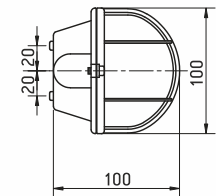
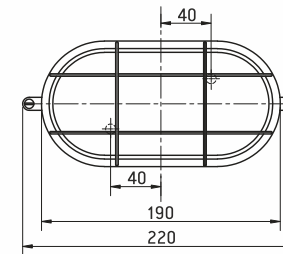
Cable Entry

Please see the drawings

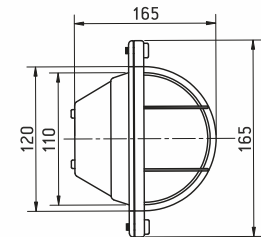
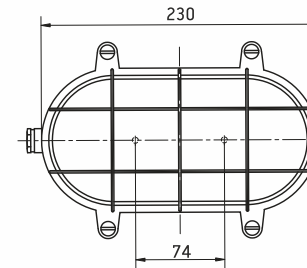
IP56



CODE 53-01



CODE 53-03



CODE 54-01

