

SURFACE WATERTIGHT BRASS LIGHTS

Application Area

- Brass lights for engine rooms, weather-exposed areas, cargo holds, deck, stores, workshops, industrial areas

Design

- According to the rules of international classification societies, VDE and IEC

Housing

- Body made of brass
- Diffuser made of glass

Electric

- 230 V 50 or 60 Hz

Lamp-holder

- E27

Mounting

- Please see the drawings

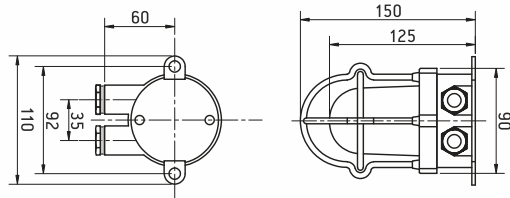
Cable Entry

- Please see the drawings

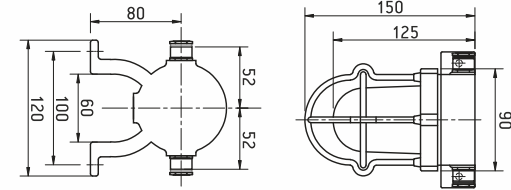
IP56



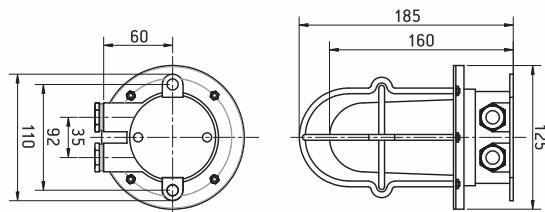
CODE 55-00



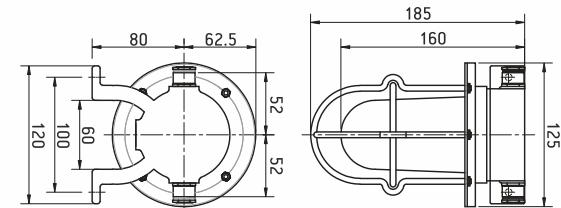
CODE 56-00



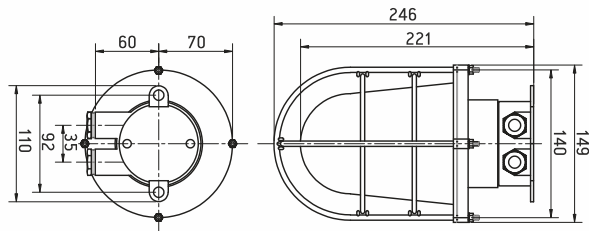
CODE 55-01



CODE 56-01



CODE 55-02



CODE 56-02

