

# BRASS WATERTIGHT JUNCTION BOXES

## Application Area

- Brass Junction boxes for engine rooms, weather-exposed areas, cargo holds, deck, stores, workshops, industrial areas

## Design

- According to the rules of international classification societies, VDE and IEC

## Housing

- Body made of brass

## Mounting

- Please see the drawings

## Electric

- 230 V 50 or 60 Hz

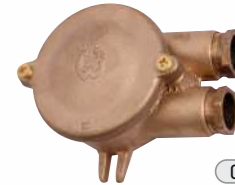
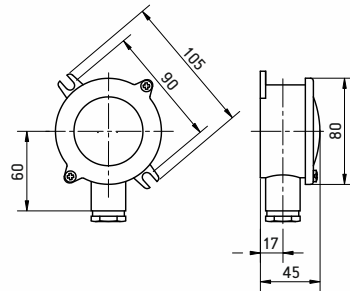
## Cable Entry

- M24x1,5

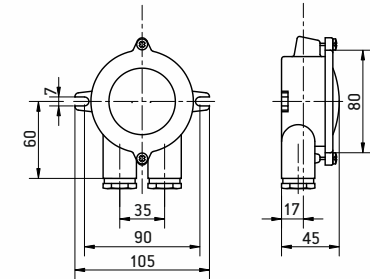
IP56



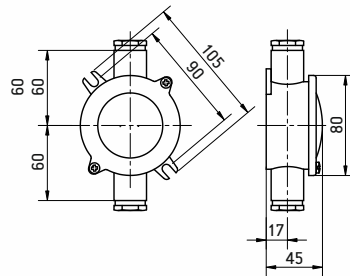
CODE 51-01



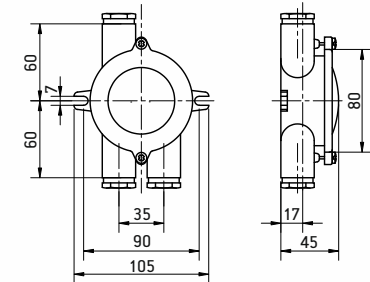
CODE 51-02



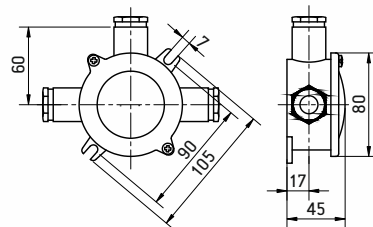
CODE 51-11



CODE 51-21



CODE 51-111



CODE 51-22

